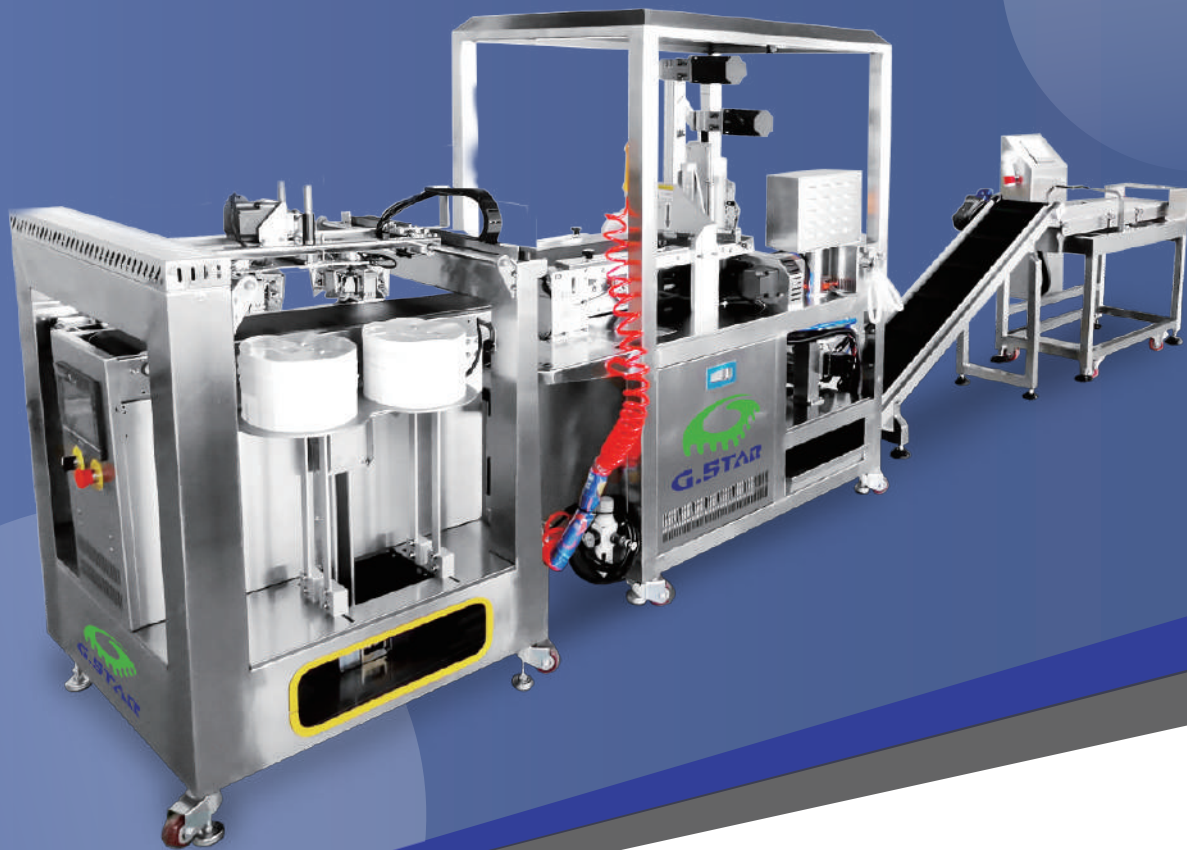




# G-STAR


## ELECTRONICS SUPPLIES CO., LTD



**Cosmetics Production Equipment / Pharmaceutical  
& Biomedical Testing Equipment / OEM Services**

---

**Fast / Safe / Zero Pollution**



## A Great Partner for Boosting Your Productivity

G-STAR ELECTRONICS SUPPLIES CO., LTD (G.STAR), found in 2001, mainly committed to manufacturing of facial mask / cosmetics production equipment and pharmaceutical & biomedical testing equipment, production design planning and providing various OEM services. Over the years, in response to the needs of customers and the international market in different industries, from traditional to technology...etc., we are constantly working on research and development to improve our products and provide timely and reliable after-sales service.



**吉上達實業有限公司**

G-STAR ELECTRONICS SUPPLIES CO., LTD.

### Customized Comprehensive Solutions

With extensive experience and a strong team, we can find suitable solutions for any of your problems in manufacturing, efficiency or quality, to improve production efficiency in the factory and product quality as well as enhance industrial competitiveness.



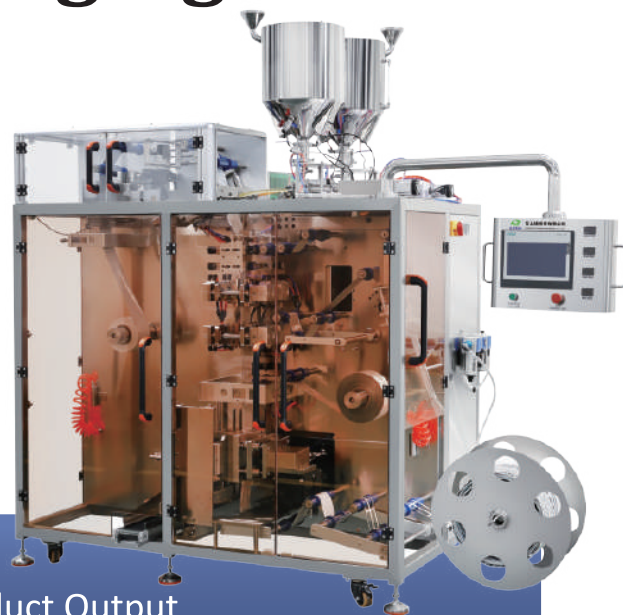
### Professional Consulting & Friendly After-sales Service

We have a variety of excellent technical teams, from R&D, engineering, manufacturing, to timely and reliable after-sales service for achieving the best reputation among customers!

# Fold & Squeeze Packaging Machine

## GS-004FSPM

- Applicable for automatic packaging of liquid paste products used in cosmetics, food, health care and pharmaceutical industries.
- Non-stick design with squeezing by one hand.

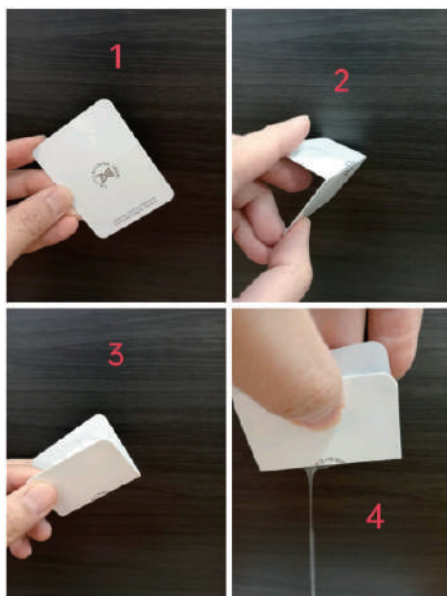


Automatic Bag Making → Filling → Sealing → Product Output

### Specifications

Machine Dimensions	L2547 x W1117 x H2171 mm
Power Supply	220V, 60Hz, Power 2KW
Pneumatic Pressure	0.6Mpa
Machine Net Weight	450 KG
Production Capacity	2800~3600 Bag/HR (Double lines)

Number of Filling Head	2 x Filling Heads
Filling Range	0.5-5 g
Filling Error	±1%
Filling Type	Plunger pump
Sealing Type	Hot pressing



### Machine Features

#### Packaging Materials

Hard card + Soft film

#### Maximum Roll Film Diameter

Hard film 500 x 75 mm / Soft film 350x75 mm

#### Composite Film Thickness

Hard film 0.45 mm / Soft film 0.08 mm

#### Bag Dimensions

Length: 30-100mm / Width: 20-100mm



# Pouch Packaging Machine

## GS-004

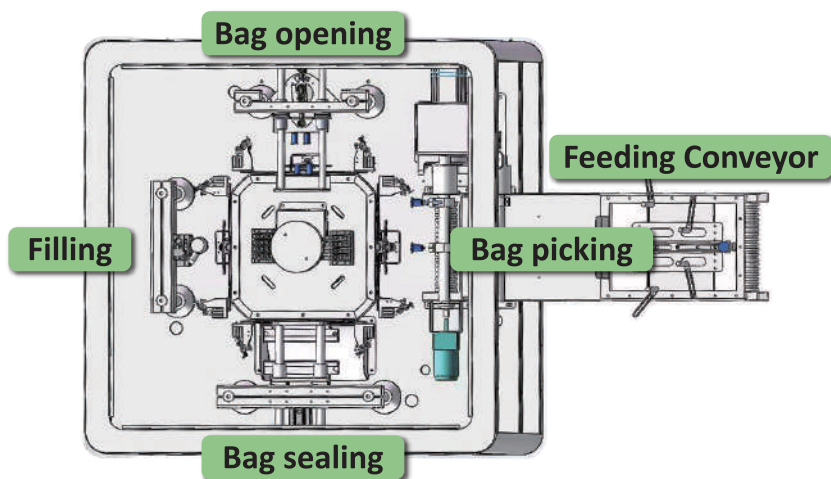
- Supports special-shaped bag production
- Independent workstations



Manual Feed-in → Bag Picking → Bag Opening →  
Filling → Sealing → Printing → Flattening (Make liquid evenly)

### Specifications

Machine Dimensions	L1730 x W1050 x H1480 mm	Filling Error	±1%
Power Supply	220V 60Hz Power 2.5-3KW	Filling Type	Magnetic Pump (Optional according to filling material)
Pneumatic Pressure	0.6 Mpa	Filling Range	4-50 ml
Machine Net Weight	360 KG	Aluminum Bag Specifications	Width: 50-200 mm / Length:50-330 mm
Production Capacity	1600-1800 Bag/HR		



### 機器特點

1. Filling range can be customized
2. Aluminum bag specifications can be customized

# High Speed Facial Mask Folding & Bagging Machine

## GS-818

3折



4折



Facial Mask with 3-Folded / 4-Folded → Automatic Bagging  
→ Finished Product Output

\*Optional Conveyor Available

### Specifications

Machine Dimensions	L1500 x W1022 x H1500 mm
Power Supply	220V, 60Hz, Power 1KW
Pneumatic Pressure	0.6Mpa
Machine Net Weight	300 KG
Production Capacity	3500 Bag/HR

Layers of Mask Cloth	1-3 Layer(s)
Number of Folding	3-Folded / 4-Folded
Aluminum Bag Specifications	Width: 100-160 mm / Length:150-220 mm
Machine Functions	Two Folding Types, Thickness Detection, Automatic Rejection

### Machine Features

#### Intelligent Numerical Control

PLC HMI Interface Control System

#### Carrying with Conveyor

The mask cloth can be easily placed on the conveyor belt manually

#### Outlet of Product Output

The finished facial mask bag with folded mask is output from the machine through this outlet

#### Detection of Empty Bag

With high precision mechanism for contact detecting thickness, empty bags or multiple masks shall be rejected automatically

#### High Speed and Stability

#### Remark

Actual production efficiency depends on the speed of mask placing manually

# Double Head Facial Mask Filling Machine

## GS-118

- Easy to operate with PLC HMI Interface Control System
- High accuracy by using precision magnetic pump filling machines
- Synchronous operation in series available for multiple machines



Automatic Bag Unloading → Bag Opening → Filling  
→ Sealing (Printing) → Output → Flattening (Making Liquid Even)

\*Can be used with Printing Machine \*Optional Conveyor Available

### Specifications

Machine Dimensions	L660 x W880 x H1250 mm
Power Supply	220V, 60Hz, Power 1.5KW
Pneumatic Pressure	0.6Mpa
Machine Net Weight	200 KG
Production Capacity	1800~2200 Bag/HR
Number of Filling Head	2 x Filling Heads

Filling Error	±1%
Filling Type	Magnetic Pump
Filling Range	5-100 ml
Layers of Mask Cloth	1-3 Layer(s)
Aluminum Bag Specifications	Width: 100-160 mm / Length:150-220 mm

### Machine Features

#### Modular Design

Easy to maintain and easy to adjust

#### Electronic & Pneumatic Parts

Guaranteed durability with PLC HMI Interface Control System

#### Automation

A series of actions such as bag taking, mask liquid filling, exhausting, sealing, date printing, finished product output, flattening, etc.

#### Vacuum Pump

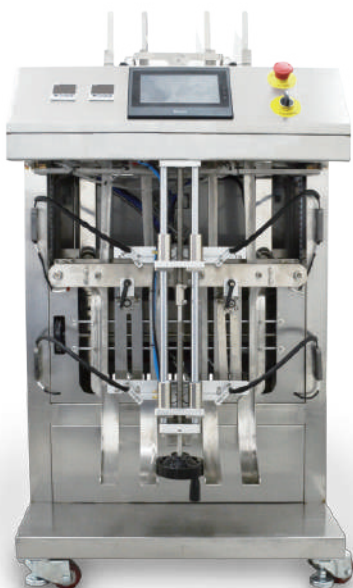
Stable operation by vacuum pressure

#### Adaption of different aluminum bags

No need to replace the feed tank, and easy for size adjustment for aluminum bags

#### PID Intelligent Temperature Controller

Great heat balance & clear heat-sealing pattern by embedded heat-sealing mechanism



# Checkweigher

## GS-220-D20

- Applicable for various bags/bottles
- Fast detection, high precision
- Can be integrated with assembly line design



Finished Product Input → Weight Checking → NG Product Classifying

### Specifications

Machine Dimensions	L1450 x W750 x H1100 mm
Power Supply	220V, 60Hz, Power 0.2KW
Machine Net Weight	500 KG
Max. Throughput	12000 PC/HR
Weighing Range	3-200g

\*Optional Conveyor Available

Detection Error	±0.2g
Min. Scale	0.1g
Height of Conveyor from Ground	780-900mm
Dimension of Conveyor	L280/400 x W200 mm

### Machine Features

#### Rejection Type (selectable)

Blowing, Rod Pushing, Flap Dropping

#### Number of Conveyor Lines

Acceleration Section, Weighing Section, Rejection Section

#### HMI

PLC HMI Interface Control System

#### Direction of Carrying

Left in and Right out while facing the operation side

#### Alarm Type

Audible & Visual Alarm

### Remark

The accuracy of detection depends on the weight, dimension, detection speed and installation environment (wind, vibration, temperature, humidity, etc.) of the product to be tested.

# Metal Detector for Aluminum Foil Packaging

## GS-AFD250

- Thanks to low-frequency magnetization enhancement technology, it has extremely high sensitivity to stainless steel and iron without interference of metal film packaging.
- It can effectively detect foreign objects of iron and stainless steel in products packaged or sealed by aluminum foil, high-salt products packaged by aluminum foil as well as ham sausages packaged with aluminum buckle.



Finished Product Input → Metal Object Detecting → NG Rejecting

### Specifications

Machine Dimensions	L1600 x W950 x H1670 mm	Detection Error	Belt adhering: Fe≥1.0 (Iron ball)
Power Supply	220V, 60Hz, Power 0.2KW		SUS≥2.0 (Stainless steel ball)
Machine Net Weight	200 KG	Dimension of Detection Window	W250 x H70 mm
Carrying Weight	5 KG	Height of Conveyor from Ground	720-850mm
Carrying Speed	0-40 m/min	Dimension of Conveyor	L1200 x W250 mm

### Machine Features

#### Rejection Type (selectable)

Blowing, Rod Pushing, Flap Dropping

#### HMI

PLC HMI Interface Control System

#### Direction of Carrying

Left in and Right out while facing the operation side

#### Alarm Type

Audible & Visual Alarm

#### Remark

1. Original Brushless DC motor , motor drive controller, SMC original pneumatic components from ORIENTAL MOTOR

2. Food-grade PU conveyor belt from Swiss Habasit



# Monodose Strip Tube Filler & Sealer

## GS-105STFS

- Easy to operate with PLC HMI Interface Control System
- No filling when no tube & overload protection with safety device



Tube Placing Manually → Filling → Sealing  
→ Tube-end Trimming → Finished & feed out

### Specifications

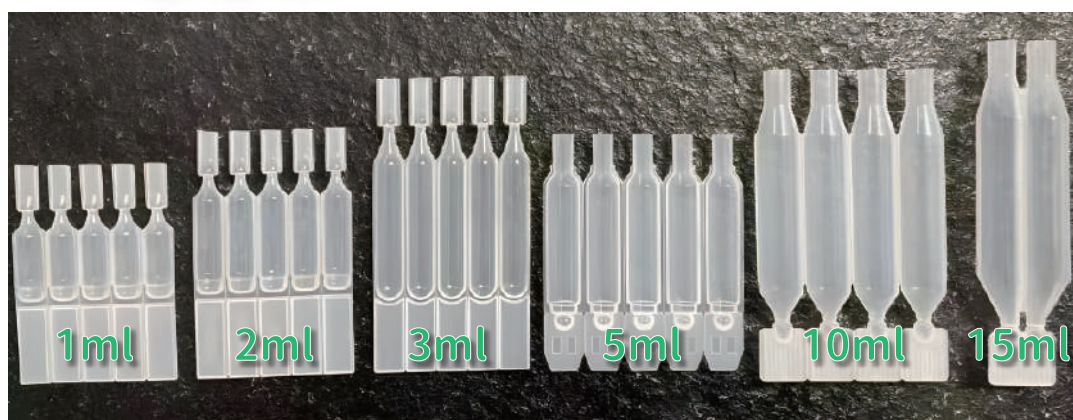
Machine Dimensions	L1300 x W1300 x H1950 mm
Power Supply	220V, 60Hz, Power 2KW
Pneumatic Pressure	0.6 Mpa
Machine Net Weight	350 KG
Production Capacity	600-900 Row/HR

※Ceramic pump for large volume is optional

Sealing Type	Ultrasonic Sealing
Filling Range	0.2-3 ml/pe turn
Filling Error	0.05 g
Applicable Packaging	Monodose Strip

### Packaging style

※Integrated with labeler is possible



# Fully Automatic Tube Filling & Sealing Machine

## GS-009

- Fully automatic tube feeding
- Easy to operate with PLC HMI Interface Control System
- No filling when no tube & overload protection with safety device



Tube Placing Manually → Marking → Filling → Sealing  
→ Date Printing → Tail Cutting → Product Output

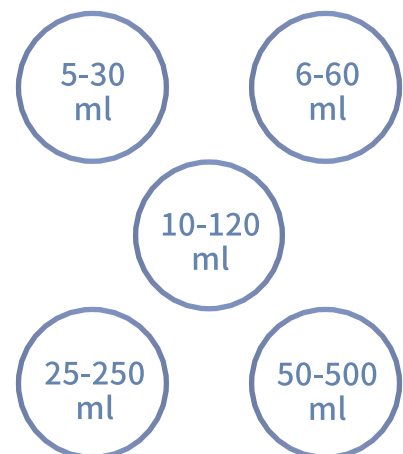
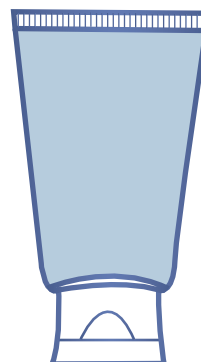
### Specifications

Machine Dimensions	L1630 x W1022 x H1500 mm	Filling Range	25-250g
Power Supply	220V 60Hz Power 2.6KW	Filling Error	±1%
Pneumatic Pressure	0.6 Mpa	Tube Height	50-220mm
Machine Net Weight	450 KG	Tube Diameter	16-50mm
Production Capacity	1300-1600 PC/HR	Packaging Material	Plastic Tube
Sealing Type	Ultrasonic Sealing		



▲ Tube Sealing Machine

### Filling Range (customizable)



# Desktop Tube Sealing Machine (No Filling)

## GS-007

- Widely applicable for various sealed tubes used in toothpaste, cosmetics, medicines, food and industrial supplies.



Manual Tube Placing → Start Key Pressing → Mark Aligning → Sealing → Cutting → Finished Product

### Specifications

Machine Dimensions	L860 x W600 x H780 mm
Power Supply	220V, 60Hz, Power 2KW
Pneumatic Pressure	0.6 Mpa
Machine Weight	85 KG

Production Capacity	600-780 PC/HR
Tube Diameter	13-50mm
Tube Height	70-210mm

### Machine Features

- Open end of the plastic tube is sealed by ultrasonic welding
- No adhesives, fillers or solvents are added and only few heat is consumed for welding
- Easy to operate, fast welding, high welding strength and high production efficiency
- PLC HMI Interface, Intelligent Numerical Control

# Semi-Automatic Vertical Filling Machine

## GS-801

- Applicable for filling alcoholic liquids with design of pneumatic pressure controlled system.
- Generally applicable for thick and thin fluidity liquids and cream products.



Activating by Foot → Automatic Filling

### Specifications

Machine Dimensions	L610 x W430 x H1560 mm (Without Hopper H1250 mm)
Pneumatic Pressure	0.6 Mpa (Total pneumatic pressure controlled)
Machine Net Weight	40 KG

Production Capacity	600-1800 Bottle/HR
Filling Type	Piston Pump
Filling Range	25-250g
Filling Error	±1%

\*Optional accessories bucket size

### Machine Features

1. Selectable continuous or intermittent filling based on product characteristics
2. Workbench equipped with swivel casters for mobility if necessary
3. Easy hand wheel adjuster for adjusting filling capacity if necessary
4. Made of corrosion-resistant high-grade stainless steel, suitable for cleaning with chemical and powerful cleaning agents



▲ Floor standing version



# Double-headed Micro Filling Machine

## GS-15-2XY

- Applicable for precision quantitative filling used in food, pharmaceutical, chemical, cosmetic, chemical and other industries.
- Applicable for precision quantitative filling of acidic and alkaline liquids used in biological reagents, oral liquids, injections, cosmetics, flavors, etc.



Automatic Displacing → Filling → Automatic Homing

### Specifications

Machine Dimensions	L810 x W400 x H800 mm	Production Capacity	0-3000 Time/HR
Power Supply	220V, 60Hz, Power 0.65KW	Number of Filling Head	2 x Filling Heads (Optional 2-5)
Rotary Speed	0-200 RPM	Filling Error	±0.5%
Machine Net Weight	110 KG	Filling Range	0.3-2.9ml or 1.5-16ml (Optional)



### Machine Features

1. Parameter adjustment through HMI
2. Ceramic filling pump
3. SUS304 stainless steel machine body

▲ Floor standing version

# Gear Pump Filling Machine

## GS-16GP

- Applicable for all fluidity liquids, from low to high viscosity.
- Applicable for use in food, pharmaceutical, pharmaceutical, chemical, cosmetic and other industries.



Manual Activating → Filling

\*Optional accessories bucket size

Specifications			
Machine Dimensions	L500 x W400 x H640 mm (Without Hopper H300 mm)	Filling Type	Gear Pump
Power Supply	220V, 60Hz, Power 0.8KW	Filling Range	5-1000g
Pneumatic Pressure	0.6 Mpa	Filling Error	±1%
Machine Net Weight	24 KG	Filling Adjustment	HMI

### Machine Features

1. Effective leaking-proof for filling liquid products with medium-acid or medium-alkaline
2. Designed for easily disassembling and cleaning

# Desktop Multi-function Labeling Machine

## GS-615

- Widely applicable for round bottles made of glass, plastic PP, PET and others as well as symmetrical and some irregular shaped products to stick self-adhesive labels or films; also applicable for double-sided adhesive products with die-cutting.
- It can be optionally integrated with "Clear Sticker Labeling Machine with Transparent Electric Eye Recognition" and "Coding Machine" for labeling and coding within one process.



Manual Feeding → Clamping → Labeling → Finished Product Output

### Specifications

Machine Dimensions	L998 x W577 x H937 mm	Labeling Error	±0.5 mm
Power Supply	220V, 60Hz, Power 0.5KW	Applicable Products	Diameter of Round Bottle: 15 - 100 mm Length: 60 - 300 mm
Pneumatic Pressure	Min. 5KG	Dimension of Applicable Labels	Label Width (Height): 5 - 180 mm Length: 5 - 350 mm
Machine Net Weight	67.5 KG		
Production Capacity	900-2400 Can/HR		

### Machine Features

- Wide application range: various shaped bottles like round, square, octagonal, flat, etc. (replacing fixtures required)
- Easy to operate: switch to corresponding parameters when switching different products
- Parameter memory: multiple parameter settings for various labels without setting parameters repeatedly
- Production counting: with required labeling quantity set, the production will stop automatically when it is completed
- High efficiency, manpower reduction, perfect labeling with high precision
- Lower cost without wear parts

# GS-09LBR Labeler

## GS-09LBR

- Easy to operate with PLC HMI Interface Control System
- Equipped with high-precision sensors

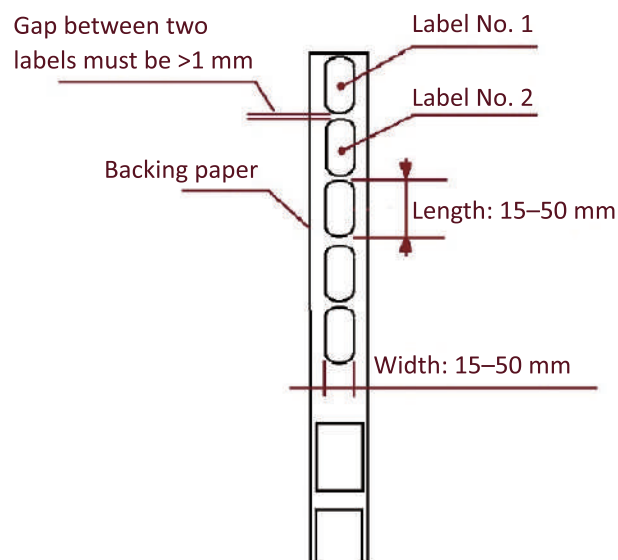


Install film roll → Adjust product position → Set label length  
→ Manually push product forward → Labeling complete

Specifications			
Machine Dimensions	L400 x W280 x H400 mm	Labeling Error	±0.5 mm
Power Supply	220V	Dimension of Applicable Labels	15 - 50 mm
Machine Net Weight	11.25 KG	Label Roll Size	Inner diameter: 25-75 mm Outer diameter: 200 mm
Production Capacity	1500-2000 /HR		

### Machine Features

1. IR positioning, precise labeling
2. Adjustable limit plate
3. Compatible with various label types





# Spray Bottle Crimper

## GS-PBCM-1

- Widely used for various sizes of perfume bottles
- Designed with pneumatic control system



Manual Feed-in → Foot Pedal Triggered → Pneumatic Force Fit

### Specifications

Machine Dimensions	L270 x W250 x H450 mm	Machine clamping force	4-8 kg/cm
Pneumatic Pressure	0.6Mpa	Bottle Height	Max. 200 mm
Machine Weight	110 KG	Applicable bottle diameter	13/15/18/20 mm
Production Capacity	2000 bottle/HR		

### Specifications Of Bottle Crimper Head

Newly upgraded material of stainless steel of crimper head, significantly improve the rigidity, hardness, wear resistance, fatigue strength and toughness of stainless steel through high-temp quenching.



Parameter	Bottleneck Diameter	Crimper head Diameter
13A	13MM (Actual measurement 12.8*13mm)	15MM
15A	15MM (Actual measurement 14.8*15mm)	17MM
18A	18MM (Actual measurement 17.8*18mm)	20MM
20A	20MM (Actual measurement 19.5*20mm)	22MM

Note: The model size corresponds to the diameter of the bottleneck

### Machine Features

1. High Compatibility! By replacing some parts, it can correspond to different sizes of bottle cap.
2. Fully pneumatic operation, simple and easy to learn.

*Improve Production Efficiency  
Enhance Industrial Competitiveness*

---



**G-STAR ELECTRONICS SUPPLIES CO., LTD**

No. 37, Ln. 165, Sec. 1, Zhangxing Rd. Changhua  
City, Changhua County, 500, Taiwan (R.O.C.)

TEL: 886-47-325958

FAX: 886-47-385246



Website



YouTube



Catalog Download